



KNIFE EQUALIZATION **WITHOUT** HUMAN INTERVENTION
FOR A **BIG REDUCTION** IN PATCHING

:: THE KNIVES CUT INTO THE MATERIAL TO DIFFERENT DEPTHS. UNTIL NOW, THESE DIFFERENCES HAVE HAD TO BE EQUALIZED MANUALLY.



COMAT SYSTEM

01.

UNTIL NOW...

Have you ever fumed at the long downtimes for setting up die cutters?

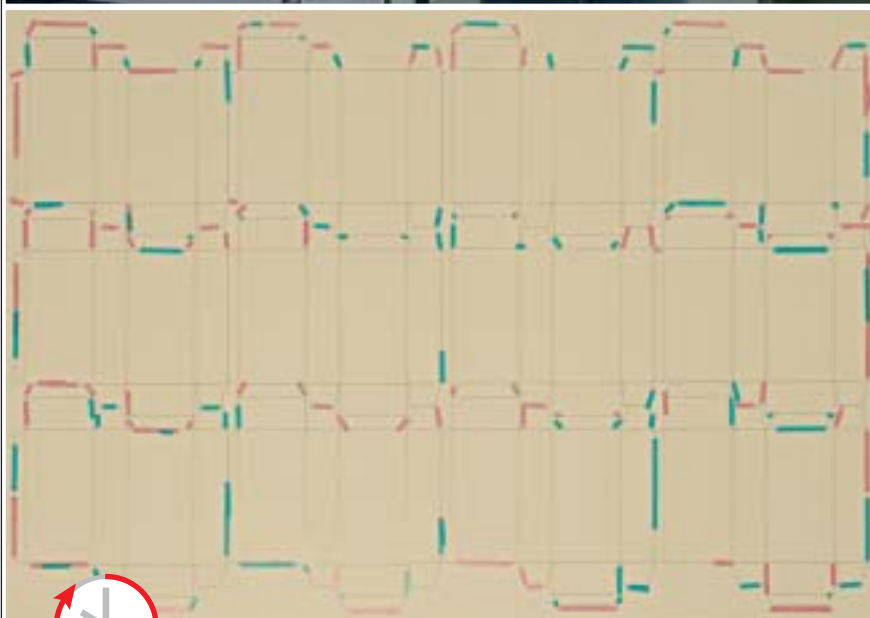
No platen is absolutely flat, and the knives have slightly different heights in every cutting die. Until now, these different cutting depths have had to be equalized manually in a time-consuming operation to achieve a good result.

The necessary patching work is often not properly done due to a lack of specialist skills. This is detrimental to the packaging quality and shortens the life of the cutting dies.

The use of soft cutting plates also often leads to deterioration of performance and/or poorer quality in the packaging (e.g. creasing).

Now you can forget all that! The new COMAT system heralds the era of a better and more industrial die cutting technology.

MAKEDREADY OF DIE CUTTER



:: COMAT IS FITTED ONCE INTO THE DIE CUTTER, AND AFTER THAT IT WILL GIVE YOU LONG SERVICE.

- : REDUCTION OF SETUP TIME THANKS TO LESS PATCHING UP WORK
- : INFREQUENT INTERRUPTIONS OF THE DIE CUTTER THANKS TO LESS NEED FOR ADDITIONAL PATCHING
- : NO MORE ZONE MAKEREADY IF A ZONE PERSISTS OF IMPERFECT CUT
- : BETTER FORMED CREASING LINES

03.

WHAT IS COMAT ?

The COMAT system is a new and patented patching technology that acts on the knives in the cutting die, compensating for incorrectly cutting areas without human intervention.

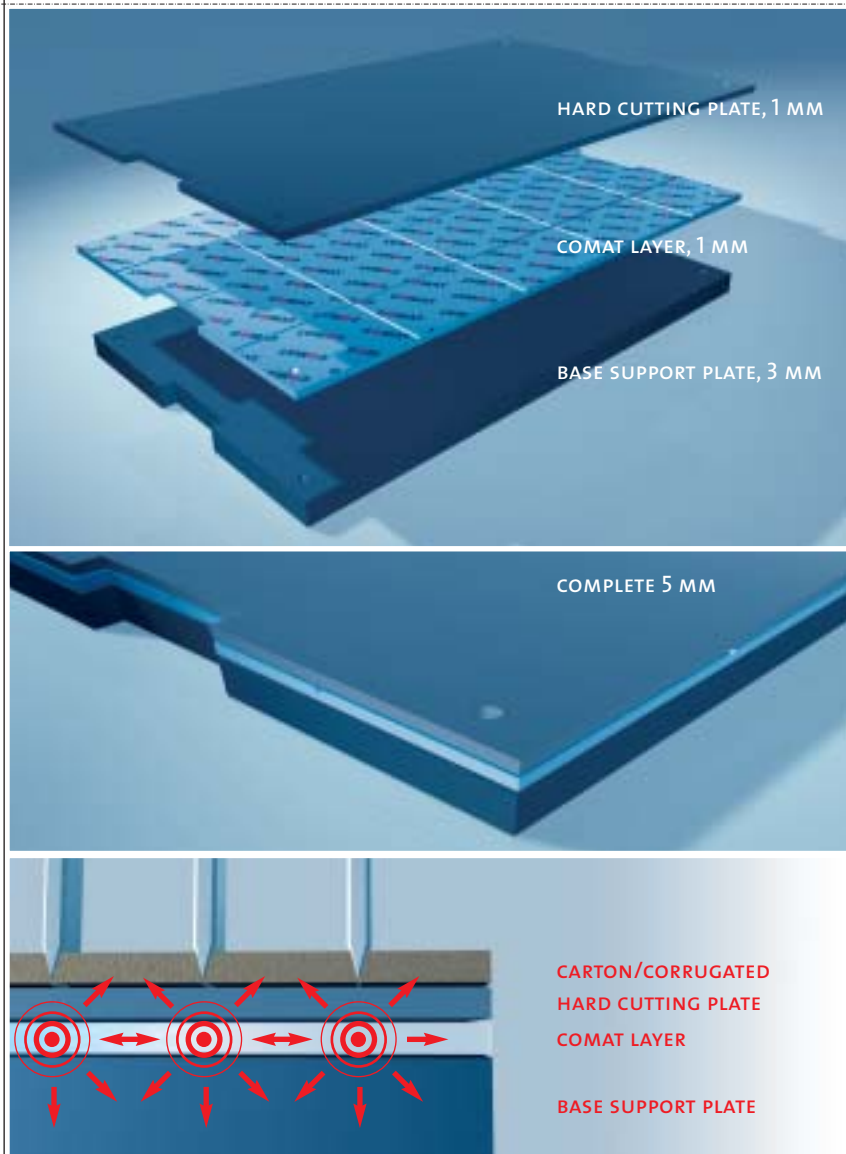
The previously used counter plate is replaced by a 3-layer sandwich plate. This sandwich plate consists of a base support plate (3 mm), the special COMAT layer (1 mm) and a replaceable cutting plate (1 mm).

What's special about the COMAT layer is its special material with enhanced magnetization. This new combination holds the complete three-part sandwich together, and acts on the knives in particular. The result is an even cut.

The COMAT layer and the base support plate always remain inside the machine, while the cutting plate (with hardness variable to comply with customer specifications) can be changed in the same way as before.

During setup, the cutting pressure is set straight away to around 90 % cutting by the knives. Only the non-cutting areas now remaining require additional patching.

THE SYSTEM



- : UP TO THREE TIMES LONGER USEFUL LIFE OF THE CUTTING DIES
- : AN END TO HIGH TOOL COSTS WITH EXPENSIVE KNIVES
- : SUITABLE FOR ALL DIE CUTTERS AND ALL TYPES OF MATERIAL
- : LESS INVESTMENT NEEDED ON NEW COUNTER PLATES AND CHASE BOTTOM PLATES

04.

THE ADVANTAGES ...

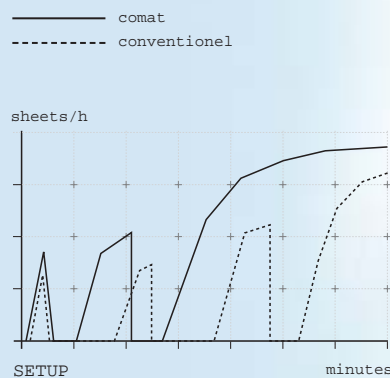
Benefit from the simplicity of this completely new patching technology. After quick-to-achieve replacement of the existing cutting plates by the new 3-layer sandwich, the new technology can be used at once, without any special experience being needed.

Even new and inexperienced machine operators can now work just as well as specialists with many years of experience. The quality of the packaging increases, since all the knives cut optimally and the scoring lines too can be shaped better.

Production can start after only a short setup time. Whereas repatching was until now often necessary during production, this is hardly ever the case with COMAT, and the cut quality remains constant.

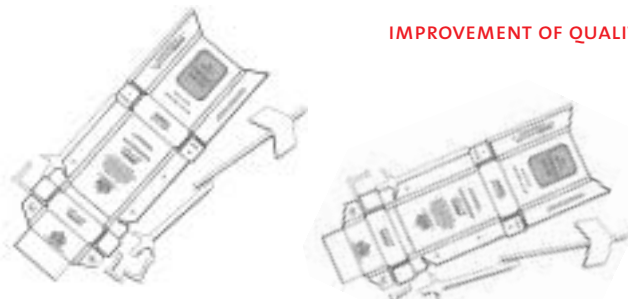
COMAT means high profitability! The COMAT system combines top quality with the best possible price/performance ratio. The once-only investment costs are negligible when set against the results. This is an investment that will pay for itself after just a few jobs, and there are no high follow-up costs.

HIGH ECONOMY



APPROX. 70 % LESS PATCHING = LESS SET-UP TIME

IMPROVEMENT OF QUALITY



FOR ALL MATERIALS



:: THE RESULT FOR THE VERY FIRST SHEET IS ALMOST EVEN CUTS BY THE KNIVES, REQUIRING ONLY A MINIMUM OF MANUAL COMPENSATION.



- : REDUCTION OF SETUP TIME THANKS TO LESS PATCHING UP WORK
- : INFREQUENT INTERRUPTIONS OF THE DIE CUTTER THANKS TO LESS NEED FOR ADDITIONAL PATCHING
- : NO MORE ZONE MAKEREADY IF A ZONE PERSISTS OF IMPERFECT CUT
- : BETTER FORMED CREASING LINES
- : UP TO THREE TIMES LONGER USEFUL LIFE OF THE CUTTING DIES
- : AN END TO HIGH TOOL COSTS WITH EXPENSIVE KNIVES
- : SUITABLE FOR ALL DIE CUTTERS AND ALL TYPES OF MATERIAL
- : LESS INVESTMENT NEEDED ON NEW COUNTER PLATES AND CHASE BOTTOM PLATES

02.

IN FUTURE... COMAT

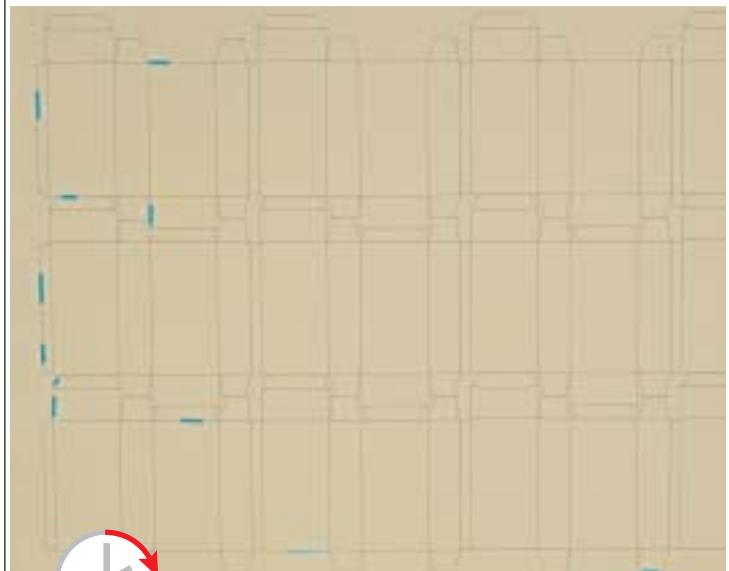
70 % LESS PATCHING

When you use the COMAT system, you can say goodbye to about 70 % of the previously required patching up work. All you do is replace the counter plate – and after that you can use the new technology to the full.

It doesn't matter whether the cutting dies are new or second-hand, which cardboard types are processed, or what die cutters are used in production – the advantages are the same.

The substitution of worn-out cutting dies between two die cutters is now also less of a problem and gives you greater flexibility in your production planning.

While die cutters using the older technology are at a standstill and patching up is in progress, machines using the new COMAT system are long since back at work!



SATISFIED CUSTOMERS



"Since we started working with the COMAT system, we've been producing more efficiently. The downtimes of the die cutters have been considerably reduced, and the quality of the packaging has improved."

Mario Meyer, Diecutting Manager
MM Packaging Behrens GmbH & Co. KG, D-Alfeld / www.mm-packaging.com



"The ease of handling and the immediate benefits completely convinced us. Our machine operators took to this patching system at once, and now they wouldn't be without it."

Rainer Schwan, Diecutting Manager and Dietmar Fiur, Project Manager
CARL EDELMANN GmbH & Co KG, D-Heidenheim / www.edelmann.de



"The Comat System provides the optimum conditions for "just-in-time" deliveries. It is astoundingly easy to use and results in a considerable efficiency increase during setup."

Hanspeter Salzmann, Diecutting Manager
ZEILER AG, CH-Köniz / www.zeiler.ch